



## STA M-Bishop Tag

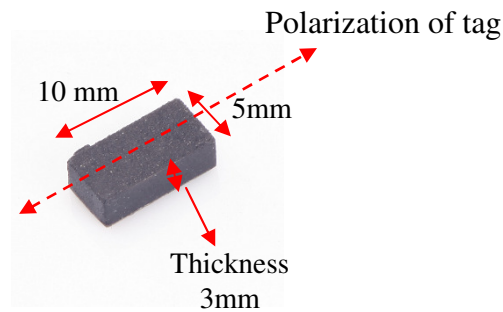
### FEATURES

- M-Bishop Tag is small in size & has very good read range, when attached to metal.
- The product has been designed to be easily attached by adhesive.
- Flexible Read/Write Range (reader dependant).

### APPLICATIONS

- Used in IT asset tracking applications such as backup tapes, servers, hard drives and media tapes without any human intervention.
- Inventory control of small tools and manufacturing equipment, servers and network routers.

<b>Chip Type:</b>	<b>Alien Higgs 3 EPC Class 1 Gen 2</b>	
	EPC 96 bit extendable up to 480 bits	
	User Memory 512 bit	
	Data retention of 50 years	
	Write endurance 100.000 cycles at Room temperature	
<b>Mechanical:</b>	Length	10±0.5 mm
	Width	5±0.5 mm (at chip area: 5.5±0.5mm)
	Thickness	3±0.5 mm
	Material	Ceramic
	Encasing	Durable Paint
	Colour	Black
	Weight	0.9 g
<b>Electrical:</b>	Operating Frequency	865-868MHz, (902-928MHz also available on request)
	Operating mode	Passive (battery-less transponder)
<b>Ingress Protection:</b>	IP68	
<b>Thermal:</b>	Storage Temp.	-40°C to +150°C
	Operating Temp.	-40°C to +85°C
<b>Part Number:</b>	381V1	



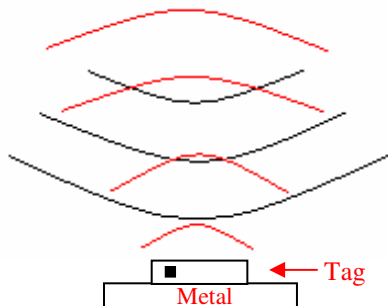
## Tag Placement

- Tag can be easily attached through adhesive tape at back.
- M-Bishop tag is polarized along with the dotted line in the above picture (Dimension section).
- Place the tag in such a way that most of its bottom area comes in direct contact with metal.
- Ensure that there is no hindrance between the tag and the reader antenna.
- Reader antenna should be parallel to the dotted line as shown in above figure:

### Correct way



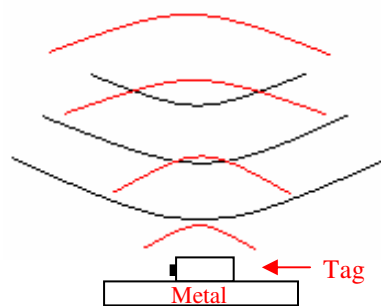
Antenna



### Wrong way

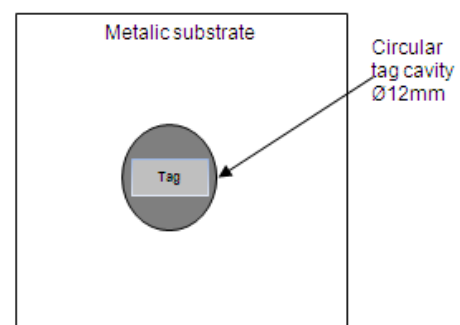
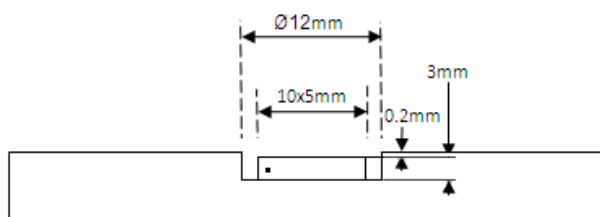


Antenna

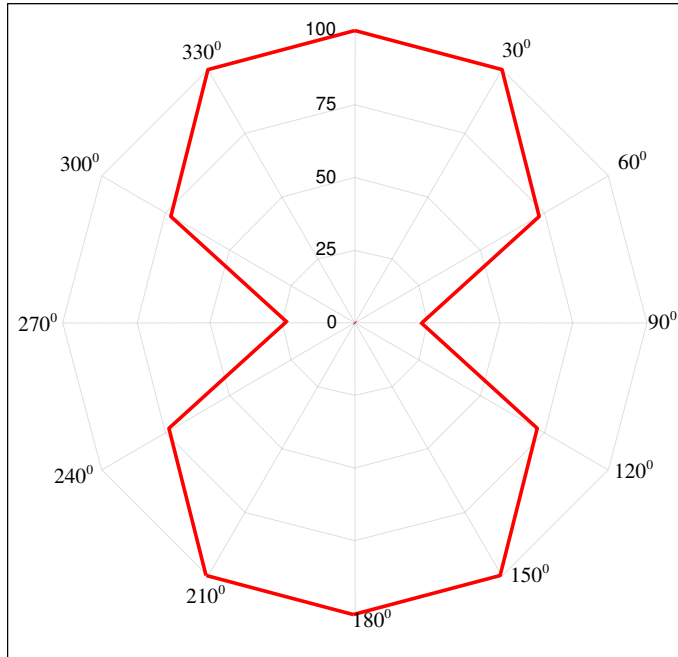


- If the tag is to be placed/embed in metal then:

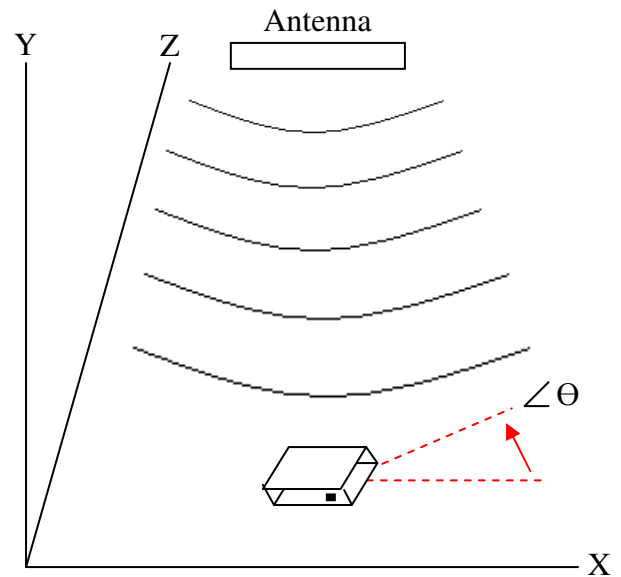
- Ensure that the tag should be surrounded by metallic surface to get optimum read range.
- It is recommended to make a round cavity in metal substrate having dimensions as per below drawing.



## M-Bishop Tag Angular Sensitivity (Relative Read Range vs. Orientation)



Read range (in percent) at various angle.



## STALLION ONEBYTE PVT. LTD.

Branches : Mumbai | Delhi | Bangalore | Ahmedabad | Hyderabad | Chennai | Kolkatta | Kochi  
Pune | Silvasa | Chandigarh | Trivandrum | Alleppey | Thrissur | Calicut | Kannur

Email: [marketing@stallionindia.com](mailto:marketing@stallionindia.com)

MIDDLE EAST



[www.stallionglobal.com](http://www.stallionglobal.com)

An ISO 9001: 2015  
Certified Company

STALLION LABEL INDUSTRIES LLC, UAE | GLOBAL STALLION SYSTEMS WLL, QATAR | STALLION SYSTEMS LLC, OMAN

BARCODE RFID AUTOMATION POS SOFTWARE CONSUMABLES